

Using Remote Desktop to connect to the Region One's terminal server.

Connecting to the Region One terminal server cluster using Remote Desktop is quite simple:

Overview: use the windows program mstsc.exe. Under a typical windows xp installation mstsc.exe will be located in c:\windows\system32 which is on the default executable search path.

Scenario 1: run mstsc via the start run command.

Click **Start > Run**

1. The run window will pop up (Figure 1) prompting you for an application name.
2. In the Open: field, type mstsc
3. This will bring up the Remote Desktop Connection Window (Figure 2).

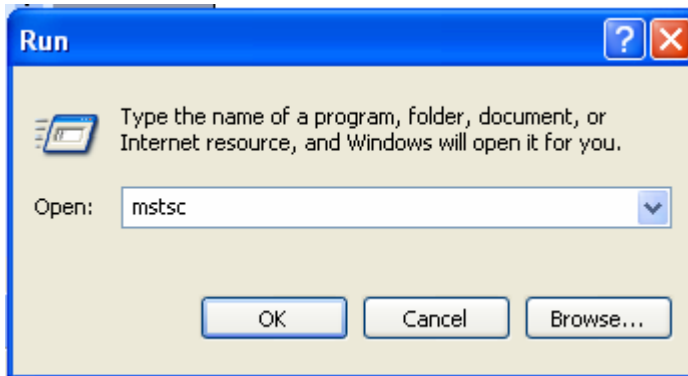


Figure 1: The Run window

Scenario 2: Run mstsc via the system short cut. (Figure 3)

Click **Start > All Programs > Accessories > Communications > Remote Desktop Connection.**

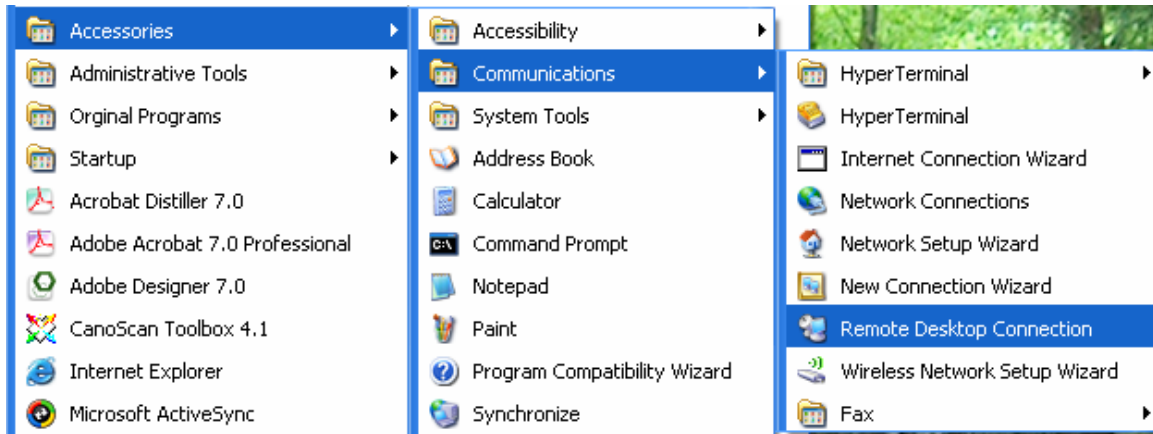


Figure 3. Remote Desktop start icon from the All programs menu.

1. The Remote Desktop Connection Window will pop up (Figure 4) prompting you for an address.
2. In the **Computer field**: type in the Name or IP address of the computer: ie. *grace.engr1.ohio-state.edu*
3. Click **Connect**.

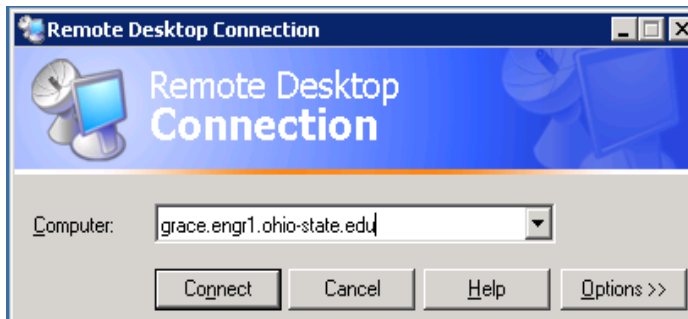


Figure 4: The Remote Desktop Connection window

Using Remote Desktop to transfer data to or from the Region One’s terminal server.

Overview: MSTSC.exe provides multiple options for your use. One such option will allow you to ask mstsc to present resources from your local device to the remote session. Users can choose to include local disk availability to their remote session. This is very useful for transferring files as well as editing local data via an application on the remote server. To set this option choose ‘Options’ from the Remote Desktop Connection Window (figure 4).



Figure 5. Remote Desktop Options Window.

From the Remote Desktop Options Window choose the Local Resources tap. Select disk drives in the local resources section see Figure 6. If you select Disk drives then your local file systems will be available to from your remote session. Please note you will need to choose this setting prior to logging into the remote device.

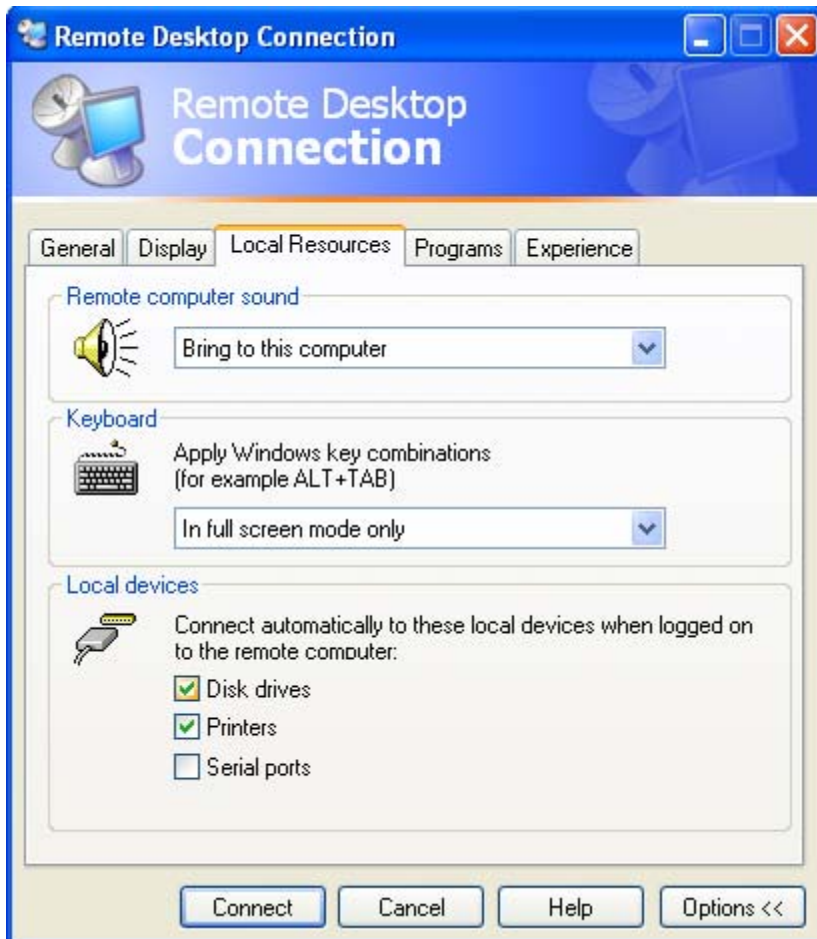


Figure 6. Remote Desktop Options Window (options tab)

There are some advanced options you can adjust, but in most cases bandwidth isn't an issue when you're on a local network connection, so you can leave them at their defaults.

If you're running an older Microsoft Operating System than Windows XP, you will need to download and install a client for your Operating System. Microsoft has released Remote Desktop clients, [free for downloading](#), for Windows 95, Windows 98, Windows Me, Windows NT 4.0, and Windows 2000.